

AUG 2023

First Choice

Retail Prices

V3

Seating Collection



Welcome to our First Choice Seating Collection

ARE YOU LOOKING TO MAXIMISE SPACE,
YET RETAIN MODERN, COMFORTABLE PRODUCTS
TO ENHANCE YOUR WORKING ENVIRONMENT?

Our **First Choice Collection** catalogues are a result of listening to our clients and putting together a complete range from **Desking, Storage, Screens, Executive, Seating, Reception, Breakout, Acoustics, Bistro and Steel Storage.**

There is a myriad of choice, from great value furniture to cutting edge styles, colours and designs.



Deliveries

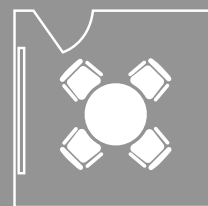
Delivery is FREE to your premises – ground floor only. The driver making the delivery will be unaccompanied and may require assistance when unloading.

Direct deliveries can be made to your customer subject to quotation. It is vital that all relevant information re access, opening hours etc is provided in advance.



Installation

Installations can be carried out by our own in house, fully trained fitters. Full information regarding access, floor level and any other specific details will be required prior to despatch to allow for a smooth and trouble-free project delivery.



Space Planning

Our in-house space planning team is available to produce drawings in 2D and 3D. Presentations can also be prepared for larger projects incorporating images and colour schemes.



Dimensions (mm)
 Seat Width: 515
 Seat Depth: 485
 Overall Height: 1220-1300

Overall Height: 1020-1110
 (without headrest)

•The added bonus of the EDO7 range is the sliding seat feature



EDO Mesh Executive Seating

Mesh back with ratchet height adjustment and lumbar support; Wide waterfall fully upholstered seat provides extra leg support; Synchronised mechanism: back lever releases free float, lock in desired position, forward lever adjusts height of gas spindle; Seat tension dial to adjust to user's weight; Height Adjustable arms; Black 5 Star spider base and castors. **Optional Chrome Base POA**

EDO7MHRHA
Executive Mesh

EDO7MHA
Executive Mesh



A €645
 B €656
 C €667

A €599
 B €611
 C €622

Dimensions (mm)
 Seat Width: 515
 Seat Depth: 485
 Overall Height: 1220-1300

Overall Height: 1020-1110
 (without headrest)



EDO5MHRHA
Executive Mesh

EDO5MHA
Executive Mesh



A €599
 B €611
 C €622

A €554
 B €543
 C €575



BETA Mesh Seating

Dimensions (mm)
Seat Width: 495
Seat Depth: 445
Overall Height: 940-1070

Mesh back with waterfall fully upholstered seat; 2 lever mechanism, permanent contact back with fixed seat: Back lever releases back to lock in desired position, Forward lever adjusts height of gas spindle; Height adjustable or fixed arm options; Black spider 5 star base with drop spindle and castors.



BA900MGA
High Back Mesh

BA900MGHA
High Back Mesh



- A €330
- B €340
- C €351

- A €362
- B €374
- C €386

Medium back armchairs; With mesh back and upholstered seat; Black plastic armrests; Available with chrome 4-legged frame or cantilever frame.

Dimensions (mm)
Seat Width: 500
Seat Depth: 470
Overall Height: 830

MALLA
Mesh Back Armchair

MALLA4
Mesh Back Armchair



- A €324
- B €336
- C €349

- A €324
- B €336
- C €349



Operator Seating

BEST SELLER

Dimensions (mm)
 Seat Width: 495
 Seat Depth: 445
 Overall Height: 975-1160

Fully upholstered seat and backrests; Moulded lumbar back support. 2 lever mechanism, permanent contact back with fixed seat: Back lever releases back to lock in desired position, Forward lever adjusts height of gas spindle; Height adjustable or fixed arm options; Black 5 star base and castors. **Stocked in Blue or Charcoal fabric.**

Tested by FIRA to B55459 Part 2: 2000



BA900GA
High Back Chair

- A €278
- B €284
- C €289

BA900G
High Back Chair



- A €242
- B €252
- C €263

BA900GHA
High Back Chair



- A €292
- B €302
- C €314





Draughtsman Seating

BA800GD
Dimensions (mm)
Seat Width: 495
Seat Depth: 445
Overall Height: 1220-1400



BA800GR
Dimensions (mm)
Seat Width: 495
Seat Depth: 445
Overall Height: 1110-1420

Medium back draughtsman chair; no arms; lumbar back support. 2 lever mechanism, permanent contact back with fixed seat: back lever releases back to lock in desired position, forward lever adjusts height of gas spindle; fixed and height adjustable footring options; black 5 star base and glides; available with fixed arms.

BA800GD
Medium Back Draughtsman with fixed footring

BA800GR
Medium Back Draughtsman with adjustable footring



A €252
B €263
C €273

A €273
B €286
C €296

Medium back industrial seating; No arms. 2 Lever Permanent Contact Mechanism; Fixed or Height adjustable chrome footring options; Black 5 star base and glides; **Available in Black.**

Dimensions (mm)
Seat Width: 460
Seat Depth: 420
BT8GD
Overall Height: 1000-1220



BT8GR
Overall Height: 920-1280

BT8GR
Medium Back Draughtsman with adjustable footring

BT8
Medium Back Typist Chair



BT8GD
Medium Back Draughtsman with fixed footring
€293

€314

€227

Draughtsman Seating BENEFITS

Draughtsman high chairs are suitable for laboratories, retail outlets, banks, height adjustable desks, work benches and anywhere you need a higher than usual seating position. Available fully upholstered in fabric or wipe clean vinyl.

Also available in durable polyurethane, constructed with a rubber texture seat and back, ideal for medical and food industries and can be washed or wiped clean. Draughtsman chairs are available with a fixed footing which is fixed at the bottom of the spindle or an adjustable footing for easy movement. All Draughtsman chairs are fitted with a gas lift to accommodate the adjustment to any height position.

Lead Time: 7-10 Days



BA900GD
Dimensions (mm)
 Seat Width: 495
 Seat Depth: 445
 Overall Height: 1220 - 1400

High back draughtsman armchair; No arms; Lumbar back support. 2 lever mechanism, permanent contact back with fixed seat: Fixed and height adjustable footing options; Black 5 star base and glides; available with fixed arms.

BA900GR
Dimensions (mm)
 Seat Width: 495
 Seat Depth: 445
 Overall Height: 1110-1420

BA900GD
 High Back
 Draughtsman
 with fixed footing

BA900GR
 High Back
 Draughtsman
 with adjustable footing



A	€273
B	€286
C	€296

A	€296
B	€309
C	€319

MECHANISMS EXPLAINED

PERMANENT CONTACT - FIXED SEAT TWO LEVER

ADDITIONAL FEATURES: SLIDING SEAT, LUMBAR PUMP



FRONT LEVER: Lift to raise seat up/down for height.

BACK LEVER: Lift up to allow movement of back. Push down to lock in desired position.

HAND WHEEL: Twist to raise/lower back height.

SYNCHRONISED TWO LEVER

ADDITIONAL FEATURES: SLIDING SEAT, LUMBAR PUMP



FRONT LEVER: Lift to raise seat up/down for height.

BACK LEVER: Lift up, back seat and synchronised free float. Push down to lock in desired position.

TENSION KNOB: Twist to adjust tilting intensity.

ASYNCHRO THREE LEVER

ADDITIONAL FEATURES: SLIDING SEAT, LUMBAR PUMP



FRONT LEVER: Lift to raise seat up/down for height.

MIDDLE LEVER: Lift up seat free floats. Push down to lock in desired position.

BACK LEVER: Lift up to have back in free float. Push down to lock in position.

HAND WHEEL: Twist to raise/lower back height.



Lead Time: 7-10 Days

Dimensions (mm)
Seat Width: 510
Seat Depth: 445
Overall Height: 1045 - 1240

Large upholstered seat and back with kidney shape back support; Free Float Mechanism (3 levers to adjust seat angle and seat height); Manual hand wheel adjusts back height; Height Adjustable arms; Chrome 5 star base and black castors.



BA915GHA
High Back Task Chair

- A €386
- B €398
- C €410

BA915GA
High Back Task Chair



- A €376
- B €386
- C €398

BA915G
High Back Task Chair



- A €330
- B €341
- C €352



Comfort Task Seating

Dimensions (mm)
 Seat Width: 500
 Seat Depth: 460
 Overall Height: 980-1230

High back task chair; Wide waterfall fully upholstered seat provides extra leg support; 3 lever independent seat mechanism. Black 5 star base and castors.



NB44EFHA
 High Back Task Chair

- A €477
- B €491
- C €517

NB44EF
 High Back Task Chair



- A €394
- B €404
- C €435

NB44EFA
 High Back Task Chair



- A €435
- B €456
- C €485

Dimensions (mm)
 Seat Width: 500
 Seat Depth: 460
 Overall Height: 980-1230

High Back Task Chair; Back with kidney shape support. Wide waterfall fully upholstered seat provides extra leg support; 3 Lever Free Float Mechanism. Black 5 star base and castors; Optional chrome base.



NB46HA
 High Back Task Chair

- A €399
- B €411
- C €422

NB46
 High Back Task Chair



- A €273
- B €286
- C €296

NB46A
 High Back Task Chair



- A €319
- B €332
- C €342



Comfort Task Seating



High back mesh task chair fully upholstered seat; Light Grey or Black components with self supporting mesh available in various colour options; 50mm adjustable lumbar support; Dynamic synchronised mechanism; Seat depth adjustment (60mm); 150kg weight capacity; 65mm hard wheel castors. **Stocked in Black.**

Dimensions (mm)
Seat Width: 470
Seat Depth: 485
Overall Height: 1020-1135

OUS740HA
Mesh Back Task Chair



€829



Comfort Task Seating



High back task chair fully upholstered seat; Graphite or Polished Aluminium components; Injection moulded 5 star plastic base; Integrated flexible back membrane; Gas lift; Seat depth adjustment (60mm); 70mm back height adjustment; 60mm hard wheel castors. **Stocked in Black.**

Dimensions (mm)
 Seat Width: 690
 Seat Depth: 420-480
 Seat Height: 450-565

FLX740HA
 High Back Task Chair



€779



A High Back Swivel Task Armchair with soft upholstered seat and light; mesh backrest - adjustable lumbar support and sliding seat; Equipped with the Epron mechanism - highly ergonomic feature to ensure healthy posture even throughout extended hours of sitting; Armrests with soft polyurethane pads; Aluminium polished, mobile base with selfbraking castors for carpeted and parquet flooring.

Dimensions (mm)
 Seat Width: 455
 Seat Depth: 400-460
 Overall Height: 1205-1300

@MOTION
 Mesh High Back Task Chair



€679



with headrest
 €739

Back Care

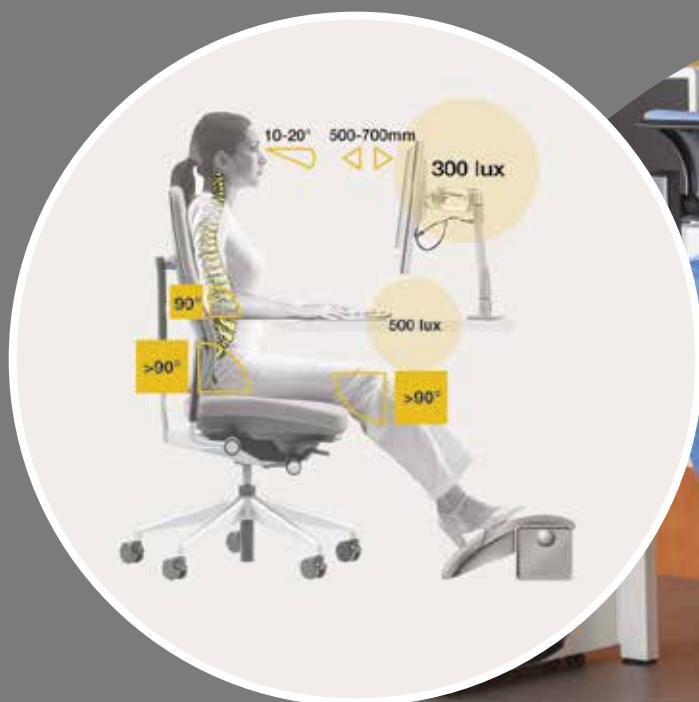
Seating



Rest is to Move...

Take two or three 30 - 60 second breaks each hour to allow your body to recover from periods of repetitive stress.

Movement during regular breaks not only reduces your risk for injury, but also relieves muscles, lubricates joints, and reduces pressure on the spine. So adjust your work position, stand up, walk around, or stretch a bit when you have the chance.





The Orthopaedica high back chair provides the ultimate level of postural support, ideal for those with back problems. The synchronised mechanism adjustments of the seat and back angle ensures the user can achieve the optimum seated position. This chair can be further optimised with additional features including fold down adjustable arms. **Stocked in Havana Black.**

OC309HA

Dimensions (mm)

Seat Width: 670

Seat Depth: 625

Overall Height:

1140-1130

€770

- Inflatable Lumbar & Thorex support
- Fully Synchronised Mechanism
- Black 5 Star Spider Base
- Fully Upholstered Chair Back
- AirTech Seat Board
- Upholstered Chair Seat
- Seat Slide
- Ratchet High Back
- Height Adjustable Arms



Inflatable Lumbar & Thorax

By using the pneumatic pump the lumbar or thorax can be inflated or deflated as required.



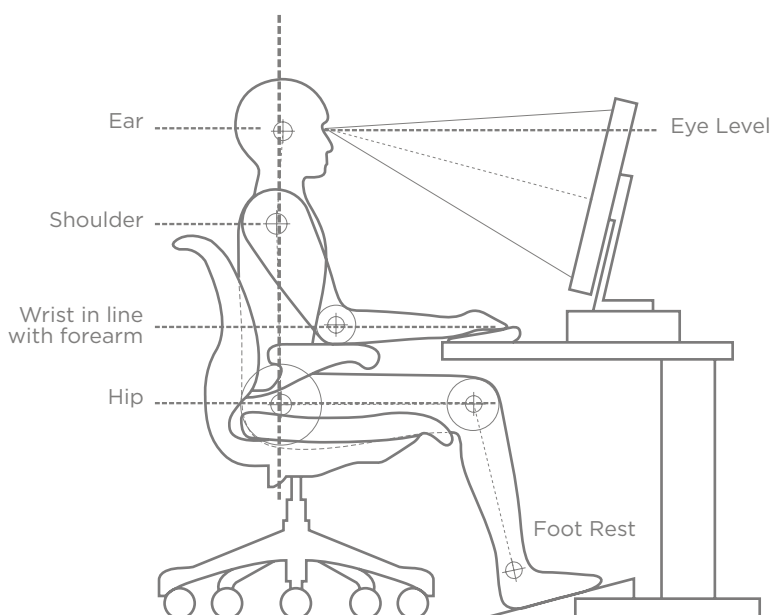
AirTech Seat Board

A push of the button allows air to flow through the two way valve; this enables the seat to move as you move and moulds to your natural shape.



Fold Down Arms

Fully adjustable fold downs arms allow easy access to workstation. **POA**





Extra Comfort Posture Chair

High back extra comfort and posture chair; wide waterfall fully upholstered seat provides extra leg support; 3 lever asynchro mechanism: back lever releases free float, lock in desired position, middle lever to adjust in free float or lock, forward lever adjusts height of gas spindle; Seat tension dial to adjust tilting; black 5 star base and castors.



- 1 Back lever releases back to free float and lock in desired position.
- 2 Middle lever releases seat to free float and lock in desired position.
- 3 Forward lever adjusts height of gas spindle
- 4 Sliding seat.
- 5 Tension knob adjusts tilting intensity.
- 6 Manual hand wheel adjusts back height.
- 7 Lumbar support pump.

NB44EFHASSLB
High Back Task Chair

Dimensions (mm)
Seat Width: 500
Seat Depth: 460
Overall Height: 980-1230



- A €524
- B €534
- C €555



EDO Extra Comfort Posture Chair

High back posture chair with extra wide seat; fully upholstered seat for extra comfort; black height adjustable arms with polyurethane pad; 2 lever synchronised mechanism: back lever releases free float, lock in desired position, forward lever adjusts height of gas spindle; black 5 star base and castors.

ED700HA
High Back Task Chair

Dimensions (mm)
Seat Width: 515
Seat Depth: 485
Overall Height: 1110-1175



- A €499
- B €509
- C €524

- 1 Wide waterfall extra comfort seat.
- 2 Sliding seat mechanism extends and locks seat for extra comfort and leg support.
- 3 Tension knob adjusts tilting intensity.
- 4 Lumbar support pump.
- 5 Height adjustable arms.
- 6 Ratchet back height adjustment.
- 7 Back lever lifts up to have back free float and lock in desired position; Front lever lifts to adjust height of gas spindle.



1. Wide Waterfall Seat
2. Sliding Seat
3. Tension Knob



4. Lumbar Pump
5. Height Adjustable Arms



6. Ratchet Back



7. 2 Lever Synchro Mechanism



24 Hour Performance Posture

Robust and durable 24-hour chair; multi-function mechanism with seat tilt; forward seat tilt promoting natural S shape in spine; independent backrest angle adjustment and tilt multi-position lock; tension control; adjustable headrest and neck support (MH1); height adjustable ratchet backrest; height & width adjustable armrests; chrome 5 star base and black castors.



MM2
High Back 24 Hour Chair

Dimensions (mm)
Seat Width: 520
Seat Depth: 535
Overall Height: 1075-1235

€1,134

- 1 Multi-function mechanism multi-position lock
- 2 Seat tilt mechanism
- 3 Height adjustable ratchet backrest
- 4 Height & width adjustable armrests
- 5 Tension control
- 6 Adjustable headrest and neck support (MH1)

MH1
High Back 24 Hour Chair with headrest

Dimensions (mm)
Seat Width: 510
Seat Depth: 495
Overall Height: 1140-1430

€1,378



Ergonomic Task Seating

High back performance posture chair with headrest; multi-function heavy duty mechanism with seat tilt; height adj arms; Inflatable lumbar pump; ratchet back; seat slide; independent back angle adjustment and multi-position lock; black 5 star base and castors.

OPTIONAL: chrome base, memory foam POA

PH1A
High Back Performance Chair with headrest

Dimensions (mm)
Seat Width: 490
Seat Depth: 470-500
Overall Height: 1070

PH1
High Back Performance Chair

Dimensions (mm)
Seat Width: 490
Seat Depth: 470-500
Overall Height: 980



190C
190kg conversion kit

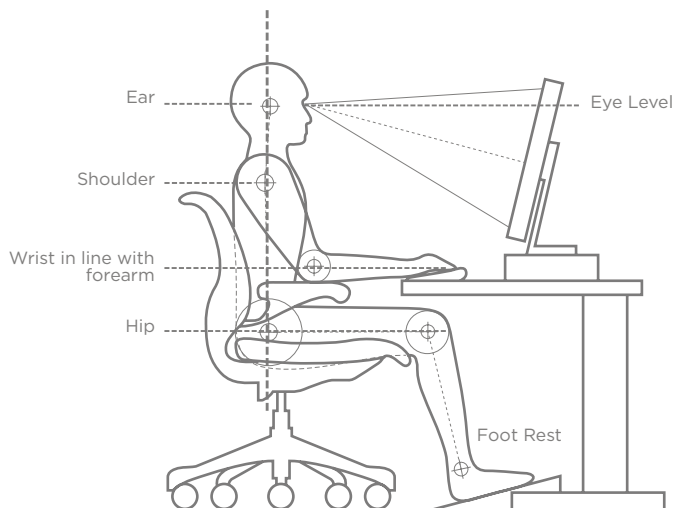
€349



€789



€699





Executive Leather Seating



Dimensions (mm)
Seat Width: 520
Seat Depth: 440
Overall Height: 1205-1295

High back executive swivel armchair fully upholstered in leather; black fixed padded arms; 2 lever standard tilt mechanism: right lever adjusts the tilt; left lever adjusts height of gas spindle, chrome 5 star base and castors; matching cantilever armchair; **Available in Black.**

LINEA.S
High Back Executive
Armchair



€859

LINEA.C
Medium Back
Armchair



€650



Dimensions (mm)
Seat Width: 520
Seat Depth: 470
Overall Height: 1040-1130

High back executive swivel armchair fully upholstered in leather; Black fixed padded arms; 1 lever standard tilt mechanism: lever adjusts the tilt and height of gas spindle; chrome 5 star base and castors; matching cantilever armchair; **Available in Black.**

MIRAGE.S
High Back Executive
Armchair



€499

MIRAGE.C
Medium Back
Armchair



€409

Executive Leather Seating



Dimensions (mm)

Width: 696
Depth: 675
Height: 1320

Cantilever Height: 1030

High back executive swivel armchair fully upholstered in leather; black fixed padded arms; 2 lever standard tilt mechanism: right lever adjusts the tilt; left lever adjusts height of gas spindle, chrome 5 star base and castors; matching cantilever armchair; **Available in Black.**

LYNX.S
High Back Chair

LYNX.C
Cantilever Chair



€939



€812

COLOUR OPTIONS:



Dimensions (mm)

Width: 700
Depth: 700
Height: 990-1135

Cantilever Height: 1030

Comfortable wide seat; epron synchron mechanism; sliding seat system; aluminium base with double castors; alternative cantilever base; **Available in Black.**



ORLANDO.S
High Back Chair

ORLANDO.C
Cantilever Chair



€874



€634



Meeting Room Seating

Medium Back
Dimensions (mm)
Seat Width: 500
Seat Depth: 470
Overall Height: 830

High Back
Dimensions (mm)
Seat Width: 500
Seat Depth: 470
Overall Height: 930



Medium or high back armchairs; upholstered seat/back; black plastic armrests; available with chrome 4-legged frame or cantilever frame.

MALLAHUB
High Back Armchair

MALLAUB
Medium Back Armchair



- A €376
- B €397
- C €404

- A €342
- B €359
- C €376

High back executive swivel armchair fully upholstered in leather; Black fixed padded arms; 1 lever standard tilt mechanism: lever adjusts the tilt and height of gas spindle; chrome 5 star base and castors; matching cantilever armchair; **Available in Black.**



MALLA4UB
Medium Back Chair

MALLA4HUB
Medium Back Armchair



- A €292
- B €302
- C €314

- A €342
- B €359
- C €376



Dimensions (mm)
 Seat Width: 470
 Seat Depth: 440
 Overall Height: 870

SAMBA.VL403
 Armchair

GREY VINYL €250

Meeting Room Seating

Meeting armchair; Fixed arms with black wooden armrest detail; Chrome 4-legged frame; **Available in Black Leather or Vinyl.**

SAMBA.L
 Armchair

SAMBA.V
 Armchair



BLACK LEATHER €285

BLACK VINYL €218



VINYL FINISHES

Chrome skid base chair, upholstered seat and backrest; stacks up to 6 high; **Available in a choice of colours.**



link option
 POA

VESTA
 Medium Back
 Chair

VESTA.A
 Medium Back
 Armchair



€149

€199



DBY415

Conference & Training Room Seating

Multi-Purpose Stacking Side Chair; Fully upholstered with extra foam back pad and seat; Chrome or Black 4-legged frame options; Armchair comes with black moulded arm rests; Wooden writing tablet is available in beech finish - with single or double arm options. **Available in a wide range of fabrics or vinyls.**

TESTED FOR STABILITY & DURABILITY TO EUROPEAN STANDARDS



Dimensions (mm)
Seat Width: 470
Seat Depth: 470
Overall Height: 820



DBY415CP



DBY415EP

DBY415CP	Stackable side chair	€160
DBY415EP	Stackable side chair	€147
DBY415CPA	Stackable side armchair	€193
DBY415EPA	Stackable side armchair	€189
DBY415CPWT	Training room chair with wooden writing tablet	€250
DBY415EPWT	Training room chair with wooden writing tablet	€246
DBY415ASLAMR	Training room chair with black writing tablet (RH)	€272
DBY415ASLAML	Training room chair with black writing tablet (LH)	€272



DBY415CPA



DBY415EPA



DBY415CPWT



DBY415EPWT



DBY415ASLAMR



DBY415ASLAML



	DBY415CP	DBY415EP	DBY415CPA	DBY415EPA	DBY415CPWT	DBY415EPWT	DBY415ASLAMR	DBY415ASLAML
Extra foam back and seat pad	●	●	●	●	●	●	●	●
Robust heavy gauge steel. 7.5Kg	●	●	●	●	●	●	●	●
Double welded frame	●	●	●	●	●	●	●	●
Floor protectors	●	●	●	●	●	●	●	●
Black frame		●		●		●		
Chrome frame	●		●		●		●	●
Frame plug	●	●	●	●	●	●	●	●
Black polypropylene moulded arms			●	●	●	●	●	●
Robust beech wooden writing tablet					●	●		
Robust black ASLAM writing tablet							●	●
Left hand option						●	●	●
Right hand option						●	●	



Multi-Purpose Contract Seating

Dimensions (mm)
Seat Width: 470
Seat Depth: 460
Overall Height: 820

4 Legged stacking side chair; upholstered seat and back; writing tablet available, right hand ONLY; black or chrome frame: stacks maximum of 12; set of arms available; **Available in Charcoal, Blue or Madrid Red.**



21SB
Stackable Side Chair

21SC
Stackable Side Chair

FOLDING WRITING TABLET



ASALM
Writing Tablet for 21 Series

€74



available with link

€68

€79

4 Legged stacking side chair; a choice of either plywood or polypropylene seat and backrest; chrome frame; stacks maximum of 12; **Available in a range of wood laminates or plastic colour finishes.**



21SPC
Stackable Side Chair

21SWOOD
Stackable Side Chair



available with link

€79

€126

COLOUR OPTIONS:



WOOD FINISHES

COLOUR OPTIONS:



PLASTIC FINISHES



Contract Seating

Dimensions (mm)
 Seat Width: 495
 Seat Depth: 445
 Overall Height: 975-1160



High back operators chair; gas height adjustment; black nylon fixed arm option; 2 lever mechanism, permanent contact back with fixed seat; back lever releases back to lock in desired position, forward lever adjusts height of gas spindle; black 5 star base and castors; **Available in Charcoal or Blue fabric.**

OC9
High Back Chair

OC9A
High Back Chair



€194

€215

Dimensions (mm)
 Seat Width: 500
 Seat Depth: 480
 Overall Height: 980-1100

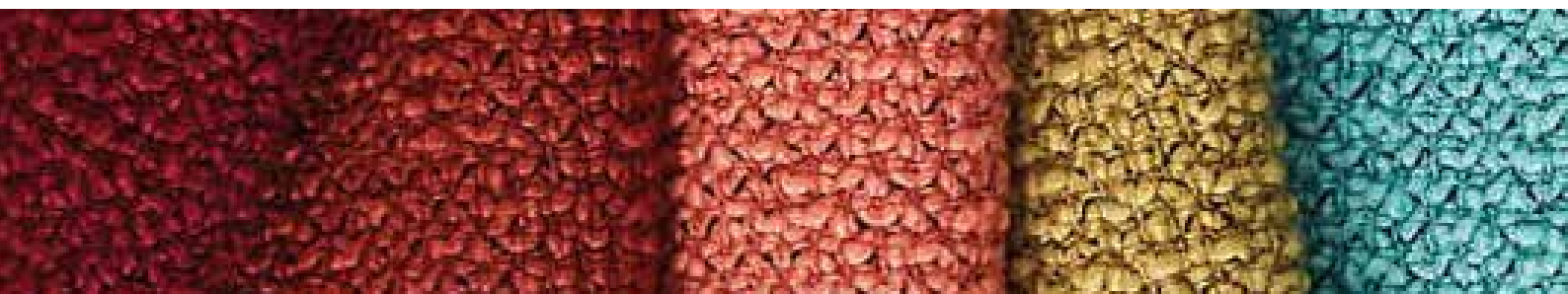


High back operators chair; gas height adjustment; sculptured back; chrome 5 star base; complete with height adjustable arms; 2 lever mechanism, permanent contact back with fixed seat; back lever releases back to lock in desired position, forward lever adjusts height of gas spindle; boxed for easy storage; **Available in Black, Blue or Charcoal fabric.**

OC5
High Back Chair



€272

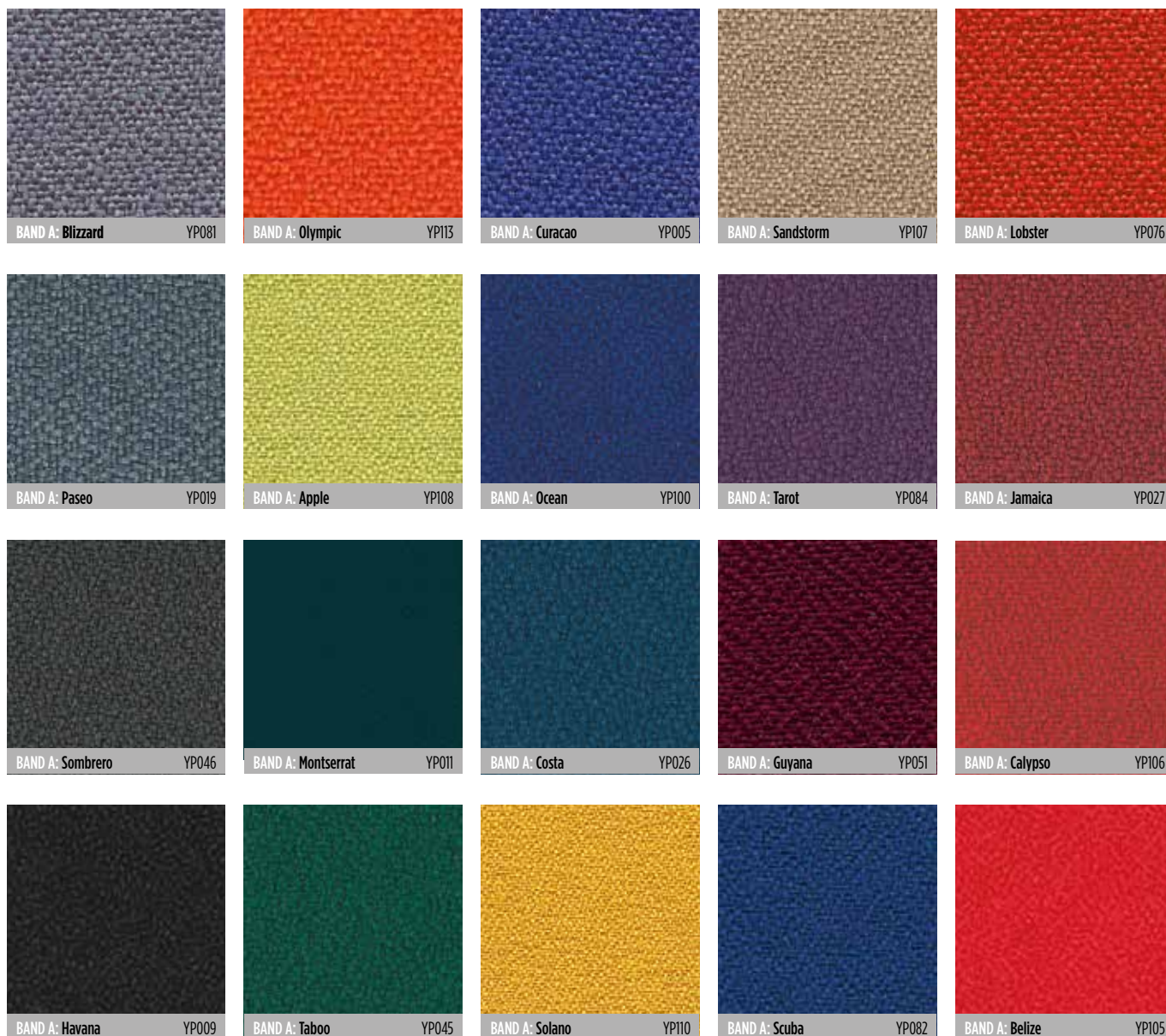


Phoenix

Phoenix is a cost-effective simple crêpe weave fabric available in a wide selection of commercial colorways, suitable for task seating.

SEATING FABRICS

PHOENIX - BAND A



Due to the limitations of the printing process colours may not be 100% accurate, please request samples.



Urban Plus

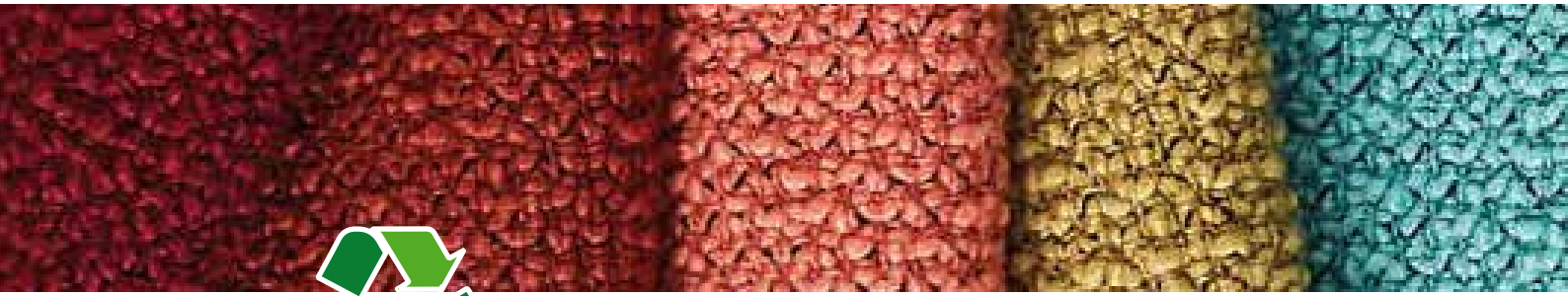
Urban has a sharply styled architectural look with clean lines forming a structured geometric grid pattern reminiscent of a downtown urban cityscape.

SEATING FABRICS

URBAN PLUS - BAND B



For more information visit www.camirafabrics.com



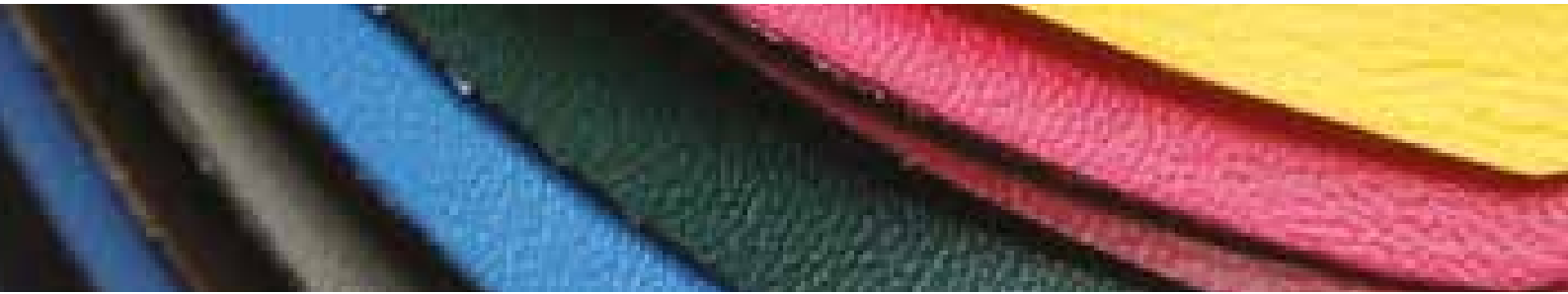
X2 was Camiras first **100% recycled** fabric to include closed loop content. 25% of the raw material is derived from Camiras own waste streams, specifically polyester selvages and yarn remnants.

SEATING FABRICS

X2 - BAND C



Due to the limitations of the printing process colours may not be 100% accurate, please request samples.



Just Colour

Just Colour is the market leader in upholstery fabrics. It is a Crib 7 vinyl with a soft feel. It is REACH compliant, phthalate free and is anti-microbial. Just Colour is suitable for all seating applications from schools to speed boats, and operating theatres to opera houses. It comes in a range of 54 bright and elegant colours.

SEATING VINYL

JUST COLOUR



Due to the limitations of the printing process colours may not be 100% accurate, please request samples.

SUMMARY OF SALES TERMS AND CONDITIONS

1. Prices

Alpha Marketing Ireland Ltd., reserves the right to vary any of the prices on its issued Price List without prior notice. Orders are accepted on condition that goods will be invoiced at prices ruling at the date of despatch. Save with the prior written agreement of a director of the Company all prices and any discounts quoted by the Company or any of its representatives whether oral or in writing, are made on the basis that the resulting amounts invoiced must in all circumstances be settled in full by the Customer within thirty days of the date of the invoice. In all circumstances the amount of V.A.T. shown on the invoice must be paid in full.

2. Payment

Payment for goods shall become due thirty days from date of invoice and is strictly nett. If the Customer shall fail to make full payment on the due date, the Company shall be entitled to charge interest on the amount due from the date of invoice to the date of actual payment after as well as before any judgement obtained at the rate of one and a half percent per month calculated on a daily basis. If the Customer shall fail to pay in full within sixty days from date of invoice, the Customer shall reimburse the Company for any expenses reasonably incurred by the Company in the collection of all sums due. All cheques to be made payable to Alpha Marketing Ireland Ltd.

3. Value Added Tax

The Customer shall be responsible for V.A.T. on all orders at the prevailing standard rate on the invoice values at the time of despatch and where such agreement has been granted, the cancellation will be subject to a 25% cancellation charge.

4. Cancellations

Orders, in whole or in part, can only be cancelled with the written agreement of the Company. In cases where goods not normally stocked have been ordered specially, e.g. chairs covered in a Customer's selected upholstery, or special items of equipment the Company may not then be in a position to accept cancellation and in any event shall not be so obliged.

5. Carriage

In the event that a Customer requests that delivery of goods be made to an address other than that of the Customer, the Company shall be entitled to make an additional delivery charge and to require that assistance be available for off loading the goods.

6. Damage and Short Delivery

The Company shall not be obliged to entertain any claims of goods being delivered damaged or short delivered, unless the Customer notifies the Company in writing, quoting the delivery note number and such notice is received by the Company within seven days of the date of delivery. All damaged articles must be returned to our depot carriage paid within 1 month of despatch.

7. Delivery

Delivery times quoted are given in good faith and although the Company will make every effort to deliver on the dates given it does not accept liability for failure to do so. The Company shall be entitled to make partial deliveries and to invoice the Customer accordingly. Payment of such invoices shall be due and payable on the same terms and in the same manner as applicable to an invoice for the full delivery.

8. Specification and Continuity of Product

The Company cannot be held liable in any way whatsoever for:-

- (a) changes in specification made by its manufacturing suppliers, or
- (b) the discontinuance of any particular line.

The Company shall make all reasonable efforts to notify the Customer of such events if it becomes aware of the same.

9. Reservation of Title

(a) Legal title and ownership in the goods shall remain with the Company until the Customer shall have paid the Company in full respect of all accounts of any nature outstanding by the Customer with the Company.

(b) Until payment in full aforesaid shall have been made, the Customer shall have possession of the goods as bailee for the Company and shall have authority until such authority is countermanded by the Company, to sell the goods on behalf of the Company to third parties at arms length in the ordinary course of the Customer's business. The Customer shall hold all proceeds of such sales in trust for the Company and shall maintain such proceeds separately identified. The Company shall be entitled to all rights and claims which the Customer may have against its customers arising from such sales until payment aforesaid is made in full. (c) The Customer shall store the goods in such a way as to enable them to be identified as the property of the Company.

(d) For so long as any payment is overdue, the Company shall be entitled to enter upon any premises where the goods are located and to take possession and resell the same and for this purpose the Customer hereby grants the Company irrevocable right and licence to enter upon any premises where the goods are located. This right shall continue to subsist notwithstanding termination of this Contract for any reason and shall be without prejudice to any accrued rights of the Company.

(e) Notwithstanding these provisions for reservation of title, risk in the goods shall pass to the Customer on delivery.

10. General

Unless and until terms and conditions shall be further modified, they shall apply to any order accepted by the Company save to the extent that the terms for an order other than prices and or discounts as varied in condition 1 hereof, shall have been first agreed to in writing by a director of the Company.

11. Environment

Opportunities are sought to always purchase timbers and veneers from renewable and sustainable sources. Chipboard used is of E1 category in order to reduce harmful chemical emission during the manufacturing process. Purchasing policy on new plant and machinery ensures the minimum impact on the environment. All company cars have been converted to use lead-free petrol. Liaison continues with all regulatory bodies and trade associations.

All orders received will be placed within 48 hours of receipt, and an order acknowledgement will be notified for confirmation.

